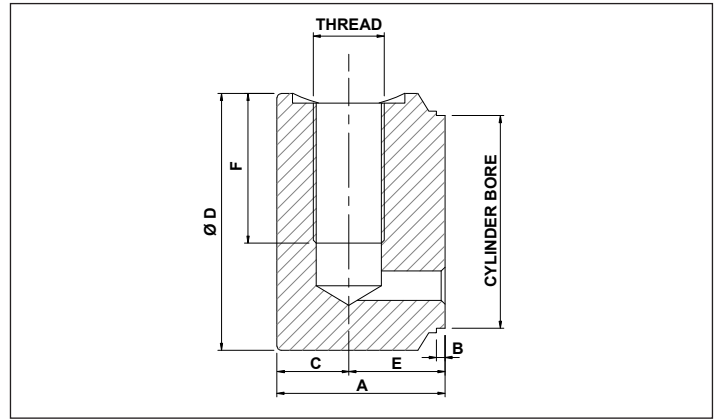
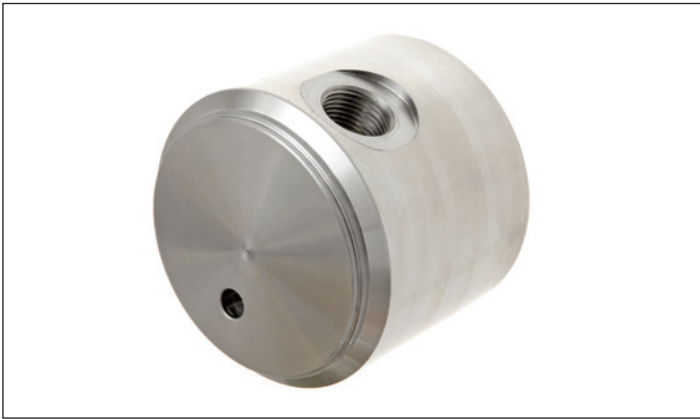


END CAPS PORTED



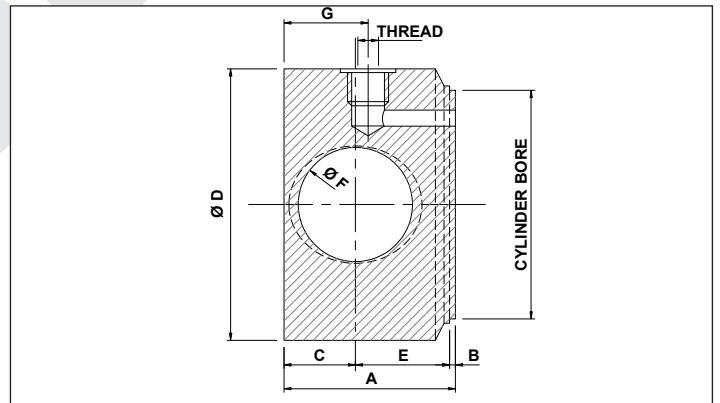
END CAP EC	CYLINDER BORE 40	TOTAL LENGTH A 45	PORTED P
---------------	---------------------	----------------------	-------------

PART NUMBER	CYLINDER BORE	A	B	C	Ø D	E	F	BSP THREAD
EC4045P	40	45	2	19	50	26	30	1/4"
EC5046P	50	46	2	19	60	27	35	3/8"
EC6046P	60	46	2	19	70	27	35	3/8"
EC6346P	63	46	2	19	73	27	35	3/8"
EC7046P	70	46	2	19	80	27	35	3/8"
EC7555P	75	55	2	22	90	33	45	1/2"
EC8055P	80	55	2	22	95	33	45	1/2"
EC9055P	90	55	2	22	105	33	45	1/2"
EC10055P	100	55	2	22	115	33	45	1/2"
EC12555P	125	55	2	22	145	33	45	1/2"

DESIGNED TO TAKE OUR RANGE OF BURST VALVES

MATERIAL: STEEL S355JR ASTM A105

END CAPS CROSS BORED AND PORTED



END CAP EC	CYLINDER BORE 40	TOTAL LENGTH A 50	HOLE SIZE 16	PORTED P
---------------	---------------------	----------------------	-----------------	-------------

PART NUMBER	CYLINDER BORE	A	B	C	Ø D	E	Ø F	G	BSP THREAD
EC4050-16P	40	50	2	15	50	33	16.2	30	1/4"
EC4060-16P	40	60	2	15	50	43	16.2	38	1/4"
EC5060-20P	50	60	2	20	60	38	20.25	38	3/8"
EC6060-25P	60	60	2	23	70	35	25.25	38	3/8"
EC6360-25P	63	60	2	23	73	35	25.25	38	3/8"
EC6360-30P	63	60	2	23	73	35	30.25	38	3/8"
EC7060-25P	70	60	2	23	80	35	25.25	38	3/8"
EC8075-30P	80	75	2	25	95	48	30.25	47	1/2"
EC9075-30P	90	75	2	25	105	48	30.25	47	1/2"
EC10075-35P	100	75	2	30	115	43	35.25	47	1/2"

MATERIAL: STEEL S355JR ASTM A105