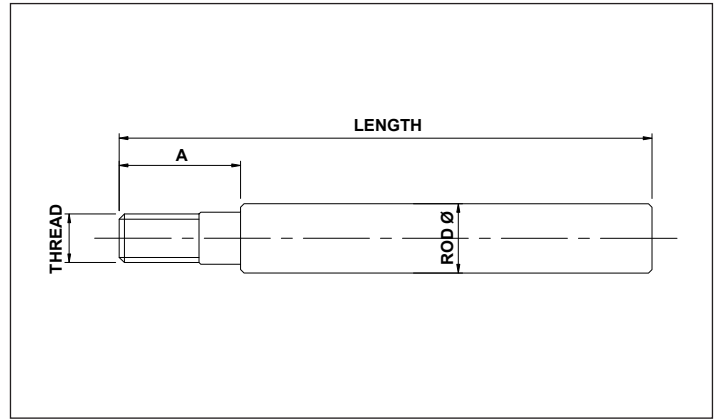


THREADED CHROMED RODS



STANDARD ROD	ROD DIAMETER	STROKE	THREAD	THREADED
SR	16	200	10	TH

PART NUMBER	ROD Ø	STROKE	LENGTH	A	THREAD	CHROMED LENGTH
SR16200-10TH	16	200	310	41	10 x1.5	269
SR16300-10TH	16	300	410	41	10 x1.5	369
SR16500-10TH	16	500	610	41	10 x1.5	569
SR16600-10TH	16	600	710	41	10 x1.5	669
SR16200-12TH	16	200	313	41	12 x 1.5	272
SR16300-12TH	16	300	413	41	12 x 1.5	372
SR16500-12TH	16	500	613	41	12 x 1.5	572
SR16600-12TH	16	600	713	41	12 x 1.5	672
SR20200-16TH	20	200	351	58	16 x 1.5	293
SR20300-16TH	20	300	451	58	16 x 1.5	393
SR20500-16TH	20	500	651	58	16 x 1.5	593
SR20600-16TH	20	600	751	58	16 x 1.5	693
SR22200-16TH	22	200	351	58	16 x 1.5	293
SR22300-16TH	22	300	451	58	16 x 1.5	393
SR22500-16TH	22	500	651	58	16 x 1.5	593
SR22600-16TH	22	600	751	58	16 x 1.5	693
SR25200-16TH	25	200	351	58	16 x 1.5	293
SR25300-16TH	25	300	451	58	16 x 1.5	393
SR25500-16TH	25	500	651	58	16 x 1.5	593
SR25600-16TH	25	600	751	58	16 x 1.5	693
SR25200-20TH	25	200	365	65	20 x 1.5	300
SR25300-20TH	25	300	465	65	20 x 1.5	400
SR25500-20TH	25	500	665	65	20 x 1.5	600
SR25600-20TH	25	600	765	65	20 x 1.5	700
SR28200-16TH	28	200	351	58	16 x 1.5	293
SR28300-16TH	28	300	451	58	16 x 1.5	393
SR28500-16TH	28	500	651	58	16 x 1.5	593
SR28600-16TH	28	600	751	58	16 x 1.5	693
SR28200-20TH	28	200	365	65	20 x 1.5	300
SR28300-20TH	28	300	465	65	20 x 1.5	400
SR28500-20TH	28	500	665	65	20 x 1.5	600
SR28600-20TH	28	600	765	65	20 x 1.5	700
SR30200-20TH	30	200	365	65	20 x 1.5	300
SR30300-20TH	30	300	465	65	20 x 1.5	400
SR30500-20TH	30	500	665	65	20 x 1.5	600
SR30600-20TH	30	600	765	65	20 x 1.5	700

THESE RODS ARE DESIGNED TO FIT ALL OUR RANGE OF THREADED PISTONS

MATERIAL : STEEL CK45 - CHROME 25 µm