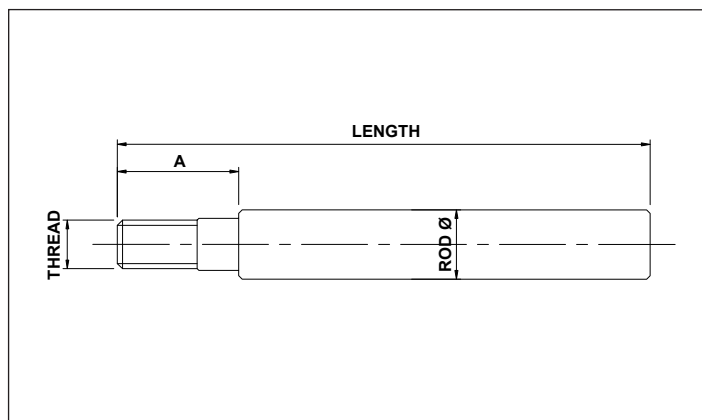


## THREADED CHROMED RODS



STANDARD ROD	ROD DIAMETER	STROKE	THREAD	THREADED
SR	30	200	24	TH

PART NUMBER	ROD Ø	STROKE	LENGTH	A	THREAD	CHROMED LENGTH
SR30200-24TH	30	200	388	75	24 x 2	313
SR30300-24TH	30	300	488	75	24 x 2	413
SR30500-24TH	30	500	688	75	24 x 2	613
SR30600-24TH	30	600	788	75	24 x 2	713
SR32200-20TH	32	200	365	65	20 x 1.5	300
SR32300-20TH	32	300	465	65	20 x 1.5	400
SR32500-20TH	32	500	665	65	20 x 1.5	600
SR32600-20TH	32	600	765	65	20 x 1.5	700
SR32200-24TH	32	200	388	75	24 x 2	313
SR32300-24TH	32	300	488	75	24 x 2	413
SR32500-24TH	32	500	688	75	24 x 2	613
SR32600-24TH	32	600	788	75	24 x 2	713
SR35200-20TH	35	200	365	65	20 x 1.5	300
SR35300-20TH	35	300	465	65	20 x 1.5	400
SR35500-20TH	35	500	665	65	20 x 1.5	600
SR35600-20TH	35	600	765	65	20 x 1.5	700
SR35200-24TH	35	200	388	75	24 x 2	313
SR35300-24TH	35	300	488	75	24 x 2	413
SR35500-24TH	35	500	688	75	24 x 2	613
SR35600-24TH	35	600	788	75	24 x 2	713
SR36200-24TH	36	200	388	75	24 x 2	313
SR36300-24TH	36	300	488	75	24 x 2	413
SR36500-24TH	36	500	688	75	24 x 2	613
SR36600-24TH	36	600	788	75	24 x 2	713
SR40200-24TH	40	200	388	75	24 x 2	313
SR40300-24TH	40	300	488	75	24 x 2	413
SR40500-24TH	40	500	688	75	24 x 2	613
SR40600-24TH	40	600	788	75	24 x 2	713
SR50200-24TH	50	200	403	75	24 x 2	328
SR50300-24TH	50	300	503	75	24 x 2	428
SR50500-24TH	50	500	703	75	24 x 2	628
SR50600-24TH	50	600	803	75	24 x 2	728

THESE RODS ARE DESIGNED TO FIT ALL OUR RANGE OF THREADED PISTONS

MATERIAL : STEEL CK45 - CHROME 25 µm