



FLUID CONTROL VALVES

CALL +44 (0)1325 282732
EMAIL sales@fpeseals.com

BUY ONLINE www.fpeseals.com

COMPANY

Founded in 1984 in Darlington, UK, FPE Seals now stock, supply and distribute to customers internationally, across all areas of industry, operating from branches across the UK, including Swan Seals in Aberdeen, as well as a branch in The Netherlands.

Our custom services also include the design and creation of express machined seals, as well as legacy sourcing for existing seals. Both ISO 9001 and ISO 14001 registered, we pride ourselves on using our industry knowledge and technical expertise, to deliver a high-quality, personal and efficient service.

We understand how important it is to get our products to you as quickly as possible, which is why we offer a same day dispatch service.

WHAT WE OFFER

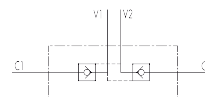
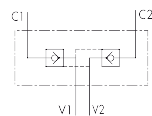
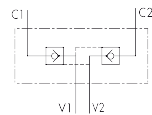
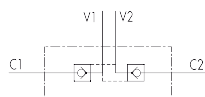
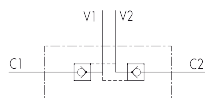
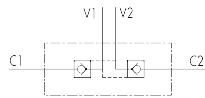
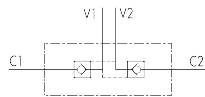
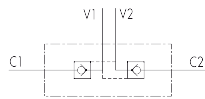
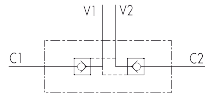
We distribute and manufacture sealing products including hydraulic seals, mechanical seals, pneumatic seals, hygienic seals, oil seals, O rings, gaskets, seal kits, cylinder parts and associated products to Aftermarket and Industrial OEM customers and Maintenance Repair and Overhaul (MRO) operations.

Available in metric or imperial sizes, in a variety of different materials, our experienced team are well-versed in helping you find the right product for the job.

We stock, supply and distribute over **35,000** individual seal and cylinder parts, along with associated products, and are official distributors for Hercules, Aston Seals and ND Industries brands.

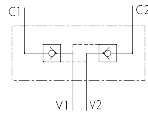


DOUBLE PILOT OPERATED CHECK VALVES



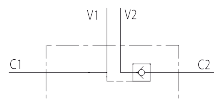
REF	TYPE	PORT SIZE
V0010	VBPDE 1/4"L	G 1/4"
V0020	VBPDE 3/8"L	G 3/8"
V0030	VBPDE 1/2" L	G 1/2"
V0050	VBPDE 3/8"	G 3/8"
V0061	VBPDE 18 L	M18X1,5
V0070	VBPDE 1/2"	G 1/2"
V0040	VBPDE 3/4"	G 3/4"
V0091	VBPDE 1/4" L 2 CEXC 10L	G 1/4"
V0090	VBPDE 1/4" L 2 CEXC	G 1/4"
V0110	VBPDE 3/8" L 2 CEXC	G 3/8"
V0130	VBPDE 3/8" L 2 CC	G 3/8"
V0135	VBPDE 1/2" L 2 CC	G 1/2"
V0117	VBPDE 1/4" L CMP/FLV	G 1/4"
V0114	VBPDE 3/8" L CMP/FLV	G 3/8"
V0112	VBPDE 3/8" L SC	G 3/8"
V0178	VBPDE 1/4" A	G 1/4"
V0180	VBPDE 3/8" A	G 3/8"
V0190	VBPDE 1/2" A	G 1/2"
V0191	VBPDE 3/4" A	G 3/4"
V0185	VBPDE 3/8" FL	G 3/8"
V0195	VBPDE 1/2" FL	G 1/2"
V0187	VBPDE 3/8" FL -L3=62	G 3/8"
V0178/FLV	VBPDE 1/4" FLV	G 1/4"
V0180/FLV	VBPDE 3/8" FLV	G 3/8"
V0190/FLV	VBPDE 1/2" FLV	G 1/2"
V0181	VBPDE 1/4" AL	G 1/4"
V0182	VBPDE 3/8" AL	G 3/8"

DOUBLE PILOT OPERATED CHECK VALVES

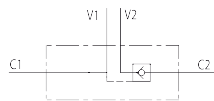


REF	TYPE	PORT SIZE
V1011	VBAS 70	G 3/8"
V1010	VBAS 80	G 3/8"
V1012	VBAS 90	G 3/8"

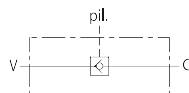
SINGLE PILOT OPERATED CHECK VALVES



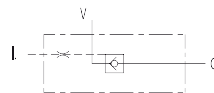
V0220	VBPSE 1/4" L 4 VIE	G 1/4"
V0230	VBPSE 3/8" L 4 VIE	G 3/8"
V0240	VBPSE 1/2" L 4 VIE	G 1/2"
V0250	VBPSE 3/8" 4 VIE	G 3/8"
V0260	VBPSE 1/2" 4 VIE	G 1/2"
V0245	VBPSE 3/4" 4 VIE	G 3/4"



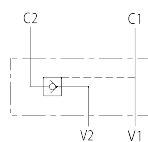
V0090/SE	VBPSE 1/4" L 2 CEXC	G 1/4"
V0110/SE	VBPSE 3/8" L 2 CEXC	G 3/8"
V0135/SE	VBPSE 1/2" L 2 CC	G 1/2"



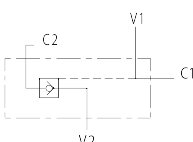
V0201	VBPSL 1/4"	G 1/4"
V0202	VBPSL 3/8"	G 3/8"
V0203	VBPSL 1/2"	G 1/2"
V0204	VBPSL 3/4"	G 1/2"
V0205	VBPSL 1"	G 1"



V0273	VBL/3 SE 1/4"	G 1/4"
V0275	VBL/3 SE 3/8"	G 3/8"
V0277	VBL/3 SE 1/2"	G 1/2"

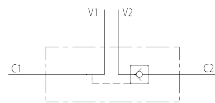
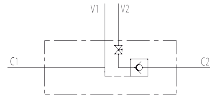
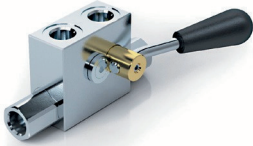


V0272	VBPSE 1/4" A	G 1/4"
V0274	VBPSE 3/8" A	G 3/8"
V0276	VBPSE 1/2" A	G 1/2"



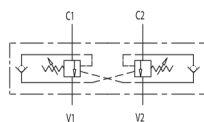
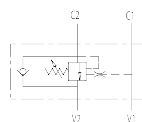
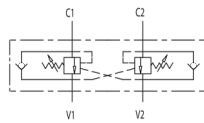
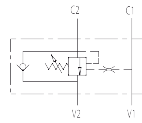
V0268	VBPSE 1/4" FL	G 1/4"
V0269	VBPSE 3/8" FL	G 3/8"
V0270	VBPSE 1/2" FL	G 1/2"

SINGLE PILOT OPERATED CHECK VALVES



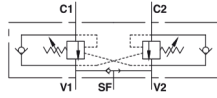
REF	TYPE	PORT SIZE
V0072/SE/SX	VBPSE 1/4" L c/RUBINETTO	G 1/4"
V0074/SE/SX	VBPSE 3/8" L c/RUBINETTO	G 3/8"
V0076/SE/SX	VBPSE 1/2" L c/RUBINETTO	G 1/2"
V0132/SE/SX	VBPSE 1/4" L c/RUB. 2 CEXC	G 1/4" 12L
V0134/SE/SX	VBPSE 3/8" L c/RUB. 2 CEXC	G 3/8" 12L
V0136/SE/SX	VBPSE 1/2" L c/RUB. 2 CC	G 1/2" 15L
V0231	VBPSE 3/8" PS	G3/8"

OVERCENTRE VALVES

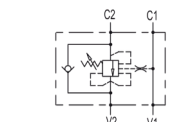
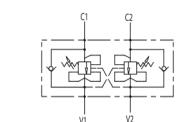
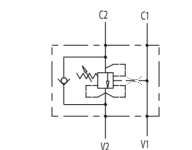
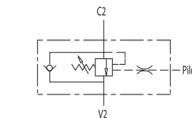
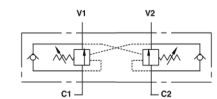
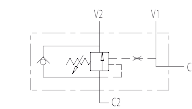
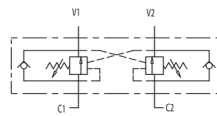
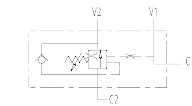


V0390	VBCD 3/8" SE	G 3/8"
V0390/RP18	VBCD 3/8" SE RP 1:8	G 3/8"
V0410	VBCD 1/2" SE	G 1/2"
V0410/RP18	VBCD 1/2" SE RP 1:8	G 1/2"
V0411	VBCD 3/4" SE	G 3/4"
V0411/RP18	VBCD 3/4" SE RP 1:8	G 3/4"
V0420	VBCD 3/8" DE	G 3/8"
V0420/RP18	VBCD 3/8" DE RP 1:8	G 3/8"
V0430	VBCD 1/2" DE	G 1/2"
V0430/RP18	VBCD 1/2" DE RP 1:8	G 1/2"
V0431	VBCD 3/4" DE	G 3/4"
V0431/RP18	VBCD 3/4" DE RP 1:8	G 3/4"
V0382	VBCD 1/4" SE/A	G 1/4"
V0392	VBCD 3/8" SE/A	G 3/8"
V0412	VBCD 1/2" SE/A	G 1/2"
V0419	VBCD 3/4" SE/A	G 3/4"
V0417	VBCD 1" SE /A	G 1"
V0418	VBCD 1/4" DE/A	G 1/4"
V0422	VBCD 3/8" DE/A	G 3/8"
V0432	VBCD 1/2" DE/A	G 1/2"
V0435	VBCD 3/4" DE/A	G 3/4"
V0436	VBCD 1" DE /A	G 1"

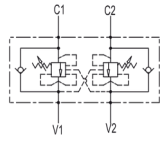
OVERCENTRE VALVES



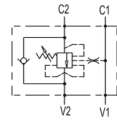
REF	TYPE	PORT SIZE
V0422/SF	VBCD 3/8" DE A SF	G 3/8"
V0432/SF	VBCD 1/2" DE A SF	G 1/2"
V0400	VBCD 3/8" SE/FL	G 3/8"
V0401	VBCD 3/8" SE FC84	G 3/8"
V0402	VBCD 1/2" SE/FL	G 1/2"
V0 42 4	VBCD 3/8" DE/FL	G 3/8"
V0 43 4	VBCD 1/2" DE/FL	G 1/2"
V0392/FLV	VBCD 3/8" SE/A FLV	G 3/8"
V0412/FLV	VBCD 1/2" SE/A FLV	G 1/2"
V0422/FLV	VBCD 3/8" DE A FLV	G 3/8"
V0 432/FLV	VBCD 1/2" DE A FLV	G 1/2"
V0394	VBCD 3/8" SE 3 VIE	G 3/8"
V0414	VBCD 1/2" SE 3 VIE	G 1/2"
V0 407	VBCD 3/8" SE CC	G 3/8"
V0 407/RP18	VBCD 3/8" SE CC RP 1:8	G 3/8"
V0 408	VBCD 1/2" SE CC	G 1/2"
V0 408/RP18	VBCD 1/2" SE CC RP 1:8	G 1/2"
V0 409	VBCD 3/4" SE CC	G 3/4"
V0 409/RP18	VBCD 3/4" SE CC RP 1:8	G 3/4"
V0441	VBCD 3/8" DE CC	G 3/8"
V0 441/RP18	VBCD 3/8" DE CC RP 1:8	G 3/8"
V0 442	VBCD 1/2" DE CC	G 1/2"
V0 442/RP18	VBCD 1/2" DE CC RP 1:8	G 1/2"
V0 443	VBCD 3/4" DE CC	G 3/4"
V0 443/RP18	VBCD 3/4" DE CC RP 1:8	G 3/4"
V0388	VBCD 1/4" SE-A CC	G 1/4"
V0391	VBCD 3/8" SE-A CC	G 3/8"
V0393	VBCD 1/2" SE-A CC	G 1/2"



OVERCENTRE VALVES

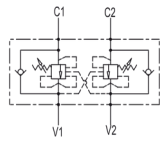


REF	TYPE	PORT SIZE
V0389	VBCD 1/4" DE-A CC	G 1/4"



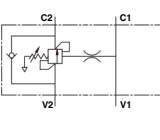
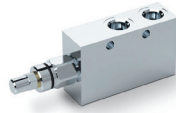
V0421	VBCD 3/8" DE-A CC	G 3/8"
--------------	-------------------	--------

V0423	VBCD 1/2" DE-A CC	G 1/2"
--------------	-------------------	--------



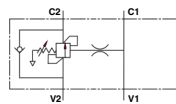
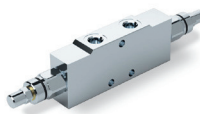
V0403	VBCD 3/8" SE FL CC	G 3/8"
--------------	--------------------	--------

V0404	VBCD 1/2" SE FL CC	G 1/2"
--------------	--------------------	--------



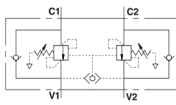
V0433	VBCD 3/8" DE FL CC	G 3/8"
--------------	--------------------	--------

V0437	VBCD 1/2" DE FL CC	G 1/2"
--------------	--------------------	--------



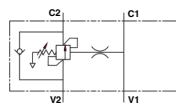
V0318	VBCD 3/8" SE-A PB	G 3/8"
--------------	-------------------	--------

V0319	VBCD 1/2" SE-A PB	G 1/2"
--------------	-------------------	--------



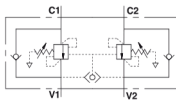
V0315	VBCD 3/8" DE-A PB	G 3/8"
--------------	-------------------	--------

V0316	VBCD 1/2" DE-A PB	G 1/2"
--------------	-------------------	--------



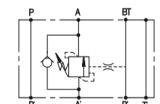
V0310	VBCD 3/8" SE FL PB	G 3/8"
--------------	--------------------	--------

V0311	VBCD 1/2" SE FL PB	G 1/2"
--------------	--------------------	--------



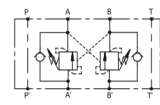
V0312	VBCD 3/8" DE FL PB	G 3/8"
--------------	--------------------	--------

V0313	VBCD 3/8" DE FL PB	G 1/2"
--------------	--------------------	--------

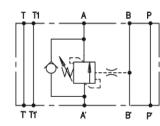


V1411	VBCD SE/A NG6 CETOP 3	
--------------	-----------------------	--

V1412	VBCD SE/B NG6 CETOP 3	
--------------	-----------------------	--



V1421	VBCD DE NG6 CETOP 3	
--------------	---------------------	--



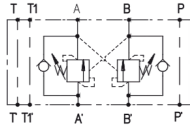
V1431	VBCD SE/A NG10 CETOP 5	
--------------	------------------------	--

V1432	VBCD SE/B NG10 CETOP 5	
--------------	------------------------	--

V1436	VBCD SE/A NG10 CETOP 5 CC	
--------------	---------------------------	--

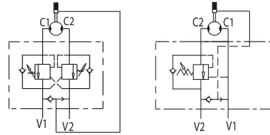
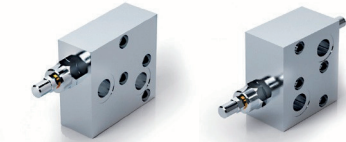
V1437	VBCD SE/B NG10 CETOP 5 CC	
--------------	---------------------------	--

OVERCENTRE VALVES

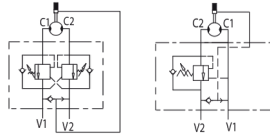


REF	TYPE	PORT SIZE
-----	------	-----------

V1441	VBCDF DE NG10 CETOP 5	
V1447	VBCDF DE NG10 CETOP 5 CC	

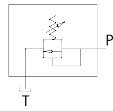


V0415	VBCDF 1/2" SE OMP-OMR	G 1/2"
V0415/SF	VBCDF 1/2" SE OMP-OMR SF	G 1/2"
V0425	VBCDF 1/2" DE OMP-OMR	G 1/2"
V0425/SF	VBCDF 1/2" DE OMP-OMR SF	G 1/2"

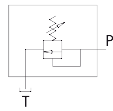


V0416	VBCDF 1/2" SE OMS	G 1/2"
V0416/SF	VBCDF 1/2" SE OMS SF	G 1/2"
V0426	VBCDF 1/2" DE OMS	G 1/2"
V0426/SF	VBCDF 1/2" DE OMS SF	G 1/2"

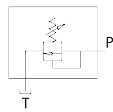
RELIEF VALVES



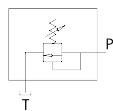
VC0180/200	VMPC 20 10-180 BAR	3/4"-16
VC0200/350	VMPC 20 180-350 BAR	3/4"-16



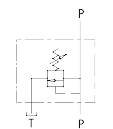
VC0350/120	VMPC 35 10-120 BAR	M20X1,5
VC0350/300	VMPC 35 50-300 BAR	M20X1,5



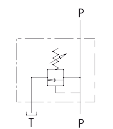
VC0800/120	VMPC 80 10-120 BAR	M20X1,5
VC0800/300	VMPC 80 50-300 BAR	M26X1,5



VC1200/200	VMPC 120 20-200 BAR	M32X1,5
VC1200/400	VMPC 120 50-400 BAR	M32X1,5

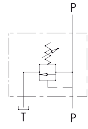


V0689	VMP 1/4" L	G 1/4"
V0690	VMP 3/8" L	G 3/8"

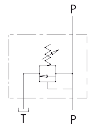


V0700	VMP 3/8"	G 3/8"
V0710	VMP 1/2"	G 1/2"
V0720	VMP 3/4"	G 3/4"

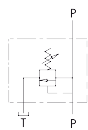
RELIEF VALVES



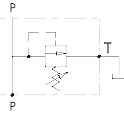
REF	TYPE	PORT SIZE
V0688	VMP/L/D5 1/4"	G 1/4"



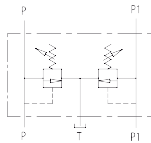
V0691	VMP/L/D5 3/8"	G 3/8"
V0692	VMP/L/D5 1/2"	G 1/2"
V0693	VMP/L/D5 3/4"	G 3/4"



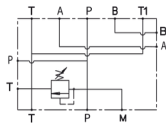
V0726	VMPP/L/D5 3/4"	G 3/4"
--------------	----------------	--------



V0725	VMPP 3/4"	G 3/4"
V0735	VMPP 1"	G 1"

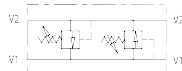


V0732	VMPD 3/8"	G 3/8"
V0734	VMPD 1/2"	G 1/2"

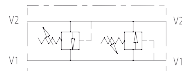


BS030	VMP NG6 CETOP 3	G 3/8"
BS050	VMP NG10 CETOP 5	G 3/4"

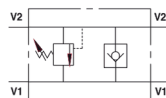
DUAL CROSS RELIEF VALVES



V0438	VAU 1/4"	G 1/4"
V0440	VAU 3/8"	G 3/8"
V0450	VAU 1/2"	G 1/2"
V0460	VAU 3/4"	G 3/4"

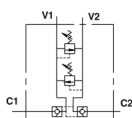
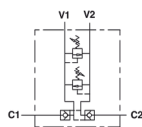
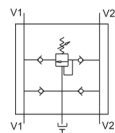
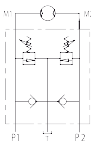
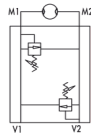
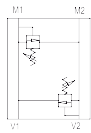
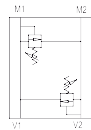
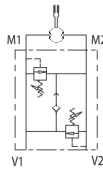
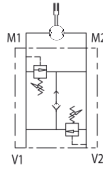
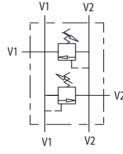


V0470	VAU 1"	G 1"
--------------	--------	------



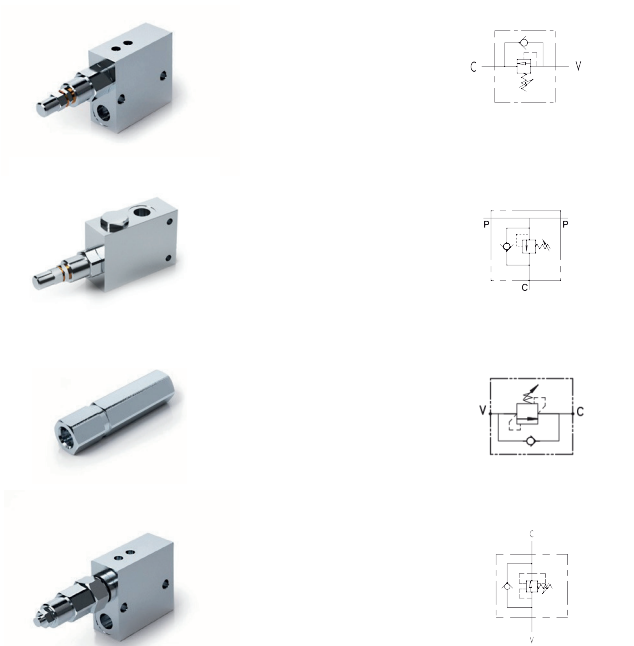
V0736	VAUAC 1"	G 1"
--------------	----------	------

DUAL CROSS RELIEF VALVES



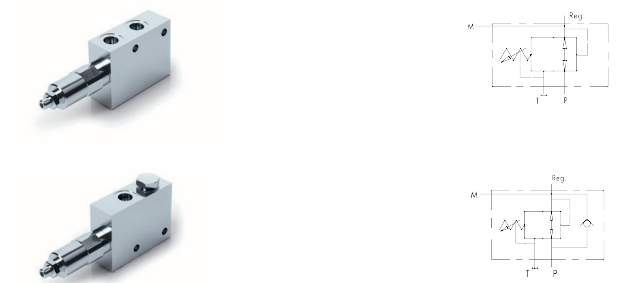
REF	TYPE	PORT SIZE
V0737	VMPDI 3/8"	G 3/8"
V0738	VMPDI 1/2"	G 1/2"
V0499	VAU 1/2" SE OMP/OMR	G 1/2"
V0499/SF	VAU 1/2" SE OMP/OMRSF	G 1/2"
V0500	VAU 1/2" DE OMP/OMR	G 1/2"
V0500/SF	VAU 1/2" DE OMP/OMRSF	G 1/2"
V0500/AC	VAU 1/2" OMP/OMR AC	G 1/2"
V0490	VAU 1/2" OMS	G 1/2"
V0490/SF	VAU 1/2" OMS SF	G 1/2"
V0489	VAU 3/4" OMS SE	G 1/2"
V0489/SF	VAU 1/2" OMS SE SF	G 1/2"
V0490/AC	VAU 1/2" OMS AC	G 1/2"
V0505	VAU OM 3/4" OMT	G 3/4"
V0506	VAU OM 3/4" OMT SE	G 3/4"
V0503	VAU OM 1/2" WSC	G 1/2"
CR01736Z	VTE 1/2"	G 1/2"
V0455	VAU 1/2" AG - AR	G 1/2"
CR01058Z	VTE 1/2"	G 1/2"
V0507	VAUAC 3/8"	G 3/8"
V0508	VAUAC 1/2"	G 1/2"
V0510	VAUAC 3/4"	G 3/4"
V0508/RU	VAA/RU 1/2"	G 1/2"
V0444	VBAU 3/8"	G 3/8"
V0448	VB LP 3/8"	G 3/8"
V0446	VB LP 1/2"	G 1/2"
V0454	VB LP 3/4"	G 3/4"

SEQUENCE VALVES



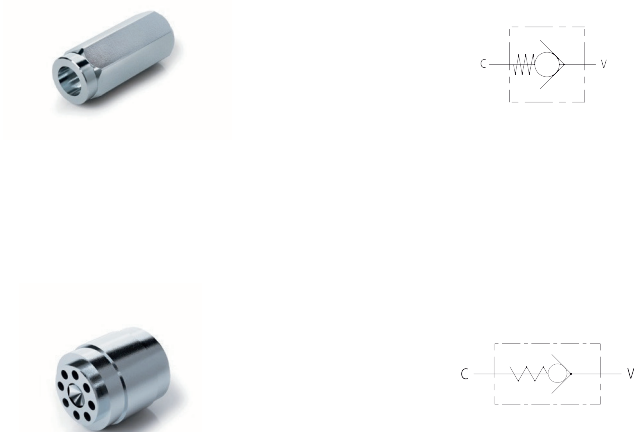
REF	TYPE	PORT SIZE
V0640	VS2C 3/8"	G 3/8"
V0660	VS2C 1/2"	G 1/2"
V0665	VS2C 3/4"	G 3/4"
V0648	VS2C 3/8" - 3V	G 3/8"
V0663	VS2C 1/2" - 3V	G 1/2"
V0646	VSQ 3/8"	3/8"
V0643	VSQ 1/2"	1/2"
V0645	VSQ 3/4"	3/4"
V0642	VSQAPP 3/8"	G 3/8"
V0662	VSQAPP 1/2"	G 1/2"
V0667	VSQAPP 3/4"	G 3/4"

DIRECT ACTING PRESSURE REDUCING VALVES



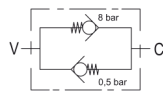
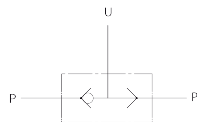
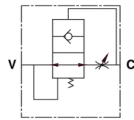
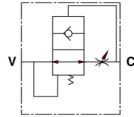
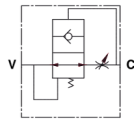
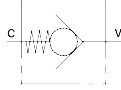
V0704	VRP 3/8"	G 3/8"
V0706	VRP 1/2"	G 1/2"
V0705	VRPRL 3/8"	G 3/8"
V0707	VRPRL 1/2"	G 1/2"

CHECK VALVES



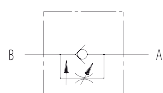
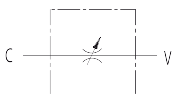
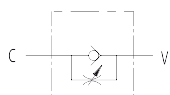
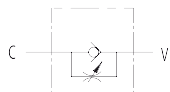
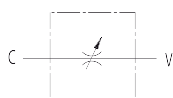
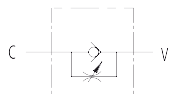
V0592	VU 1/8"	G1/8"
V0590	VU 1/4"	G1/4"
V0600	VU 3/8"	G3/8"
V0610	VU 1/2"	G1/2"
V0620	VU 3/4"	G3/4"
V0630	VU 1"	G 1"
V0631	VU 1"1/4	G1" 1/4
V0632	VU 1"1/2	G1" 1/2
V0633	VU 2"	G 2"
V0591	VUI 1/4"	G1/4"
V0601	VUI 3/8"	G3/8"
V0611	VUI 1/2"	G1/2"
V0621	VUI 3/4"	G3/4"

CHECK VALVES



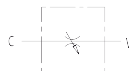
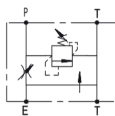
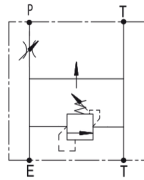
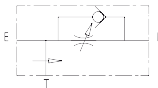
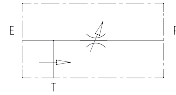
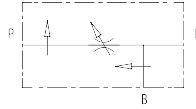
REF	TYPE	PORT SIZE
V0594/1	VU MM 1/4"	G1/4"
V060 4/1	VU MM 3/8"	G3/8"
V0614/1	VU MM 1/2"	G1/2"
V0624/1	VU MM 3/4"	G3/4"
V0634/1	VU MM 1" VU	G 1"
V0637/1	MM 1" 1/4 VU	G 1"1/4
V0638/1	MM 1" 1/2 VU	G 1"1/2
V0639/1	MM 2	G 2"
V0770	VUBA 1/4"	G1/4"
V0780	VUBA 3/8"	G3/8"
V0790	VUBA 1/2"	G1/2"
V0800	VUBA 3/4"	G3/4"
V0810	VUBA 1"	G1"
V0784	VUBA 3/8" DIN T10L	G 3/8"
V0786	VUBA 3/8" DIN T12L	G 3/8"
V0787	VUBA 3/8" DIN T15L	G 3/8"
V0794	VUBA 1/2" DIN T15L	G 1/2"
V0785	VUBR 3/8"	G3/8"
V0795	VUBR 1/2"	G1/2"
V0666	VU2P 1/4"	G1/4"
V0668	VU2P 3/8"	G3/8"
V0670	VU2P 1/2"	G1/2"
V0680	VU2P 3/4"	G3/4"
V0685	VU2P 1"	G1"
V0606	VRC 3/8"	G3/8"
V0616	VRC 1/2"	G1/2"

FLOW REGULATOR VALVES



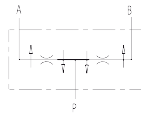
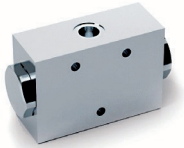
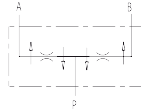
REF	TYPE	PORT SIZE
V0540	VRF 1/4"	G1/4"
V0550	VRF 3/8"	G3/8"
V0560	VRF 1/2"	G1/2"
V0570	VRF 3/4"	G3/4"
V0580	VRF 1"	G 1"
V0578	VRF 1" 1/4	G 1" 1/4
V0579	VRF 1" 1/2	G 1" 1/2
V0545	VRB 1/4"	G 1/4"
V0555	VRB 3/8"	G 3/8"
V0565	VRB 1/2"	G 1/2"
V0575	VRB 3/4"	G 3/4"
V0585	VRB 1"	G 1"
V0590	VUSF 1/4"	G 1/4"
V0600	VUSF 3/8"	G 3/8"
V0610	VUSF 1/2"	G 1/2"
V0620	VUSF 3/4"	G 3/4"
V0630	VUSF 1"	G1"
V0631	VUSF 1" 1/4	G 1" 1/4
V0632	VUSF 1" 1/2	G 1" 1/2
V0581	VRFU 90° 1/4"	G 1/4"
V0582	VRFU 90° 3/8"	G 3/8"
V0583	VRFU 90° 1/2"	G 1/2"
V0588	VRFU 90° 3/4"	G 3/4"
V0576	VRFU 90° 1"	G 1"
V0584	VRFB 90° 1/4"	G 1/4"
V0586	VRFB 90° 3/8"	G 3/8"
V0587	VRFB 90° 1/2"	G 1/2"
V0589	VRFB 90° 3/4"	G 3/4"
V0577	VRFB 90° 1"	G 1"
V0581/C	VRFU 90° 1/4" COMPENSATO	G 1/4"
V0581/C	VRFU 90° 3/8" COMPENSATO	G 3/8"
V0583/C	VRFU 90° 1/2" COMPENSATO	G 1/2"
V1115/VU	RFP2 3/8" c/VU	G 3/8"
V1125/VU	RFP2 1/2" c/VU	G 1/2"
V1135/VU	RFP2 3/4" c/VU	G 3/4"

FLOW REGULATOR VALVES



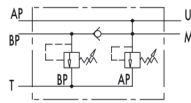
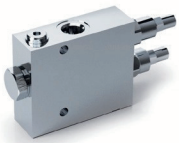
REF	TYPE	PORT SIZE
V1115	RFP2 3/8"	3/8"
V1125	RFP2 1/2"	1/2"
V1135	RFP2 3/4"	3/4"
V1145	RFP2 1"	1"
V1060	VPR3 3/8"	G 3/8"
V1070	VPR3 1/2"	G 1/2"
V1080	VPR3 3/4"	G 3/4"
V1090	VPR3 1"	G 1"
V1110	RFP3 3/8"	G 3/8"
V1120	RFP3 1/2"	G 1/2"
V1130	RFP3 3/4"	G 3/4"
V1110/VU	RFP3 3/8" c/VU	G 3/8"
V1120/VU	RFP3 1/2" c/VU	G 1/2"
V1110/VMP	RFP3 3/8" c/VMP	G 3/8"
V1120/VMP	RFP3 1/2" c/VMP	G 1/2"
V1121	RFP3 1/2" OMP/OMR	G 1/2"
V1122	RFP3 1/2" OMS	G 1/2"
V1122/VMP	RFP3 1/2" OMP/OMR c/VMP	1/2"
V1122/VMP	RFP3 1/2" OMS c/VMP	1/2"
R1351	VITE STROZZATRICE 1/4"	G 1/4"
R1361	VITE STROZZATRICE 3/8"	G 3/8"
R1371	VITE STROZZATRICE 1/2"	G 1/2"

2 WAYS FLOW DIVIDER

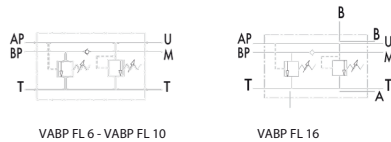
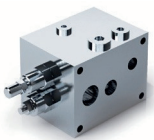


REF	TYPE	PORT SIZE
V1001	V - EQ 8	G 3/8"
V1000	V - EQ 10	G 3/8"
V1002	V - EQ 15	G 3/8"
V1003	V - EQ 20	G 3/8"
V1004	V - EQ 22	G 3/8"
V1005	V - EQ 25	G 1/2"
V1006	V - EQ 30	G 1/2"
V1007	V - EQ 50	G 1/2"
V1020	DFL 1 - 3 DFL	G 3/8"
V1021	3 - 6 DFL 6 -	G 3/8"
V1022	10 DFL 10 -	G 3/8"
V1023	20 DFL 20 -	G 3/8"
V1024	32 DFL 25 -	G 3/8"
V1025	40 DFL 40 -	G 1/2"
V1026	60 DFL 60 -	G 1/2"
V1027	80 DFL 80 -	G 1/2"
V1028	100 DFL 100 -	G 3/4"
V1029	120 DFL 120 -	G 1"
V1030	150	G 1"

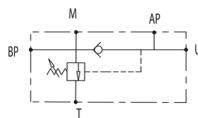
TWO PUMP "HI-LOW" UNLOADING VALVES



V0512	VABP 3/8"	G 3/8"
V0513	VAU 1/2"	G 1/2"
V0514	VABP 3/4"	G 3/4"



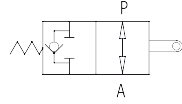
V0518	VABP FL 6	G 1/2"
V0515	VABP FL 10	G 3/4"
V0516	VABP FL 16	G 1"



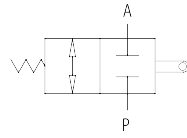
V0517	VEP FLP 1/2"	G 3/8"
V0521	VEP FLP IFF 1/2" 40	G 3/8"

END STROKE VALVES

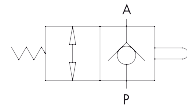
REF TYPE PORT SIZE



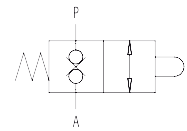
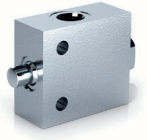
V0824	V-FCR 1T 60	G 3/8"
V0826	V-FCR 1T 80	G 1/2"
V0825	V-FCR 1T 120	3/4"



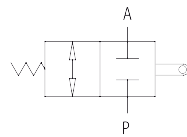
V0820	V-FCR 2T 60	G 3/8"
V0822	V-FCR 2T 80	G 1/2"
V0823	V-FCR 2T 120	G 3/4"



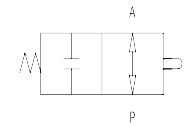
V0827	V-101 3/8" NC	G 3/8"
V0828	V-121 1/2" NC	G 1/2"
V0829	V-201 3/4" NC	G 3/4"



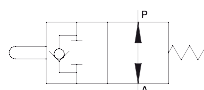
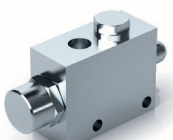
V1827	V-101 3/8" DT NC	G 3/8"
--------------	------------------	--------



V0815	V - FCC 1/2" NC	G 1/2"
--------------	-----------------	--------



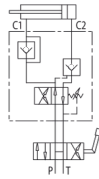
V0817	V-101 3/8" NA	G 3/8"
V0818	V-121 1/2" NA	G 1/2"



V0817/VU	V - 101 3/8" NA-VU	G 3/8"
V0818/VU	V - 121 1/2" NA-VU	G 1/2"

PLOUGH OVERTURNING VALVES

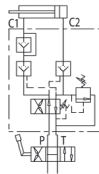
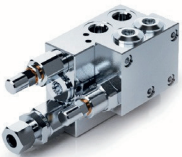
REF TYPE PORT SIZE



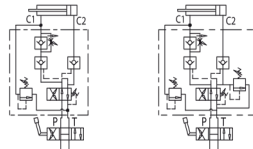
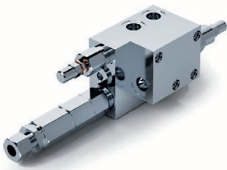
V0278	VRA 40/50 SE	G 3/8"
V0280	VRA 60/80 SE	G 3/8"
V0281	VRA 60/80 SE FL	G 3/8"



V0282	VRAP 40/50 DE	G 3/8"
V0290	VRAP 60/80 DE	G 3/8"
V0300	VRAP 80/100 DE	G 3/8"
V0302	VRAP 100/110 DE	G 3/8"
V0320	VRAP 110/130 DE	G 3/8"

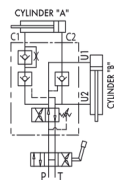
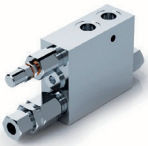


V0348	VRAP 40/50 DE + VMP	G 3/8"
V0350	VRAP 60/80 DE + VMP	G 3/8"
V0360	VRAP 80/100 DE + VMP	G 3/8"
V0376	VRAP 100/110 DE + VMP	G 3/8"
V0380	VRAP 110/130 DE + VMP	G 3/8"

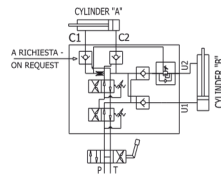
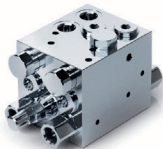


V0326 V0325

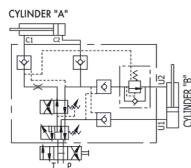
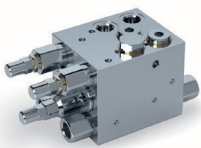
V0325	VRAP 110/130 FSCM	G 3/8"
V0326	VRAP 110/130 FSSM	G 3/8"



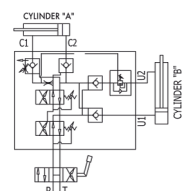
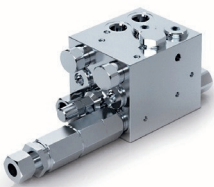
V0330	VRAP 80/100 SS	G 3/8"
V0331	VRAP 100/110 SS VMP	G 3/8"



V0339	VRAP 70/80 SE SV	G 3/8"
V0340	VRAP 80/100 SE SV	G 3/8"

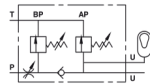
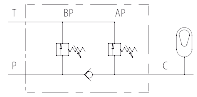
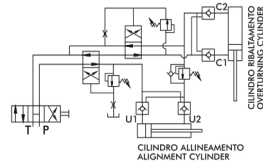
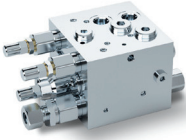
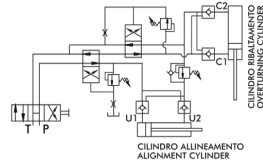
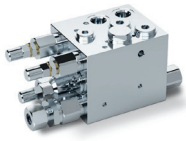


V0345	VRAP 70/80 DE SV	G 3/8"
V0346	VRAP 80/100 DE SV	G 3/8"



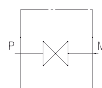
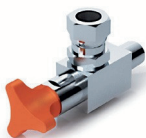
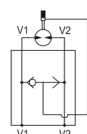
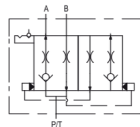
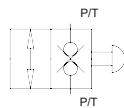
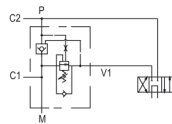
V0342	VRAP 80/90 SV FSSM	G 3/8"
V0343	VRAP 110/130 SV FSCM	G 3/8"

PLOUGH OVERTURNING VALVES



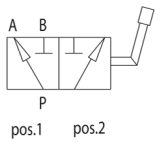
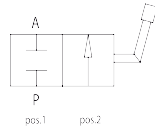
REF	TYPE	PORT SIZE
V0365	VRAP SV SE M REVERSE	3/8"
V0366	VRAP SV DE M REVERSE	3/8"
V0355	VRAP DE SV XL	3/8"
V0295	MASSELLO 1 VIA 3/8"	G 3/8"
V0296	MASSELLO 1 VIA 1/2"	G 3/8"
V0297	VNS CS 3/8"	G 3/8"

VARIOUS VALVES



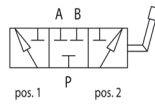
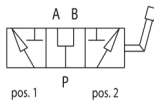
V1220	VRSP 1/2"	G 1/2"
V1230	VRSP 3/4"	G 3/4"
V1320	VEM 1/2"	G 1/2"
V1450	VDFS 3/4" - 16 UNF	G 3/4" - 16UNF
V0333	VSBF 1/2" OMP/OMR	G 1/2"
V0334	VSBF 1/2" OMS	G 1/2"
EM001L	EML 1/4" MF	G 1/4"
EM001N	EM90° 1/4" MF	G 1/4"

HIGH PRESSURE BALL VALVES

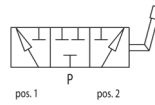
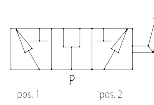


REF	TYPE	PORT SIZE
V0830	RS 2 VIE 1/4"	G 1/4"
V0840	RS 2 VIE 3/8"	G 3/8"
V0850	RS 2 VIE 1/2"	G 1/2"
V0860	RS 2 VIE 3/4"	G 3/4"
V0870	RS 2 VIE 1"	G 1"
V0871	RS 2 VIE 1" 1/4	G 1"1/4
V0874	RS 2 VIE 1" 1/2	G 1"1/2
V0876	RS 2 VIE 2"	G 2"
V0832	RS 3 VIE 1/4"	G 1/4"
V0842	RS 3 VIE 3/8"	G 3/8"
V0852	RS 3 VIE 1/2"	G 1/2"
V0862	RS 3 VIE 3/4"	G 3/4"
V0872	RS 3 VIE 1" RS	G 1"
V0873	3 VIE 1" 1/4 RS	G1" 1/4
V0875	3 VIE 1" 1/2	G1" 1/2

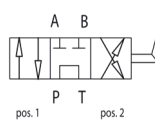
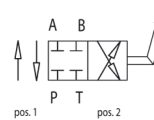
DIVERTER VALVES



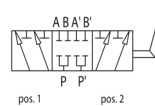
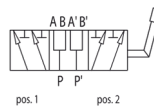
V0880	DF 3 VIE 3/8"	G 3/8"
V0890	DF 3 VIE 1/2"	G 1/2"
V0900	DF 3 VIE 3/4"	G 3/4"
V0910	DF 3 VIE 1"	G 1"



V0879/AP	DF 3 VIE 1/4" AP ACC.	1/4"
V0881/AP	DF 3 VIE 3/8" AP ACC	3/8"
V0891/AP	DF 3 VIE 1/2" AP ACC	1/2"
V0901/AP	DF 3 VIE 3/4" AP ACC.	3/4"
V0911/AP	DF 3 VIE 1" AP ACC.	1"

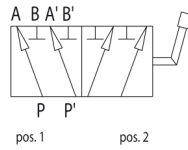


V0970	IF 4 VIE 3/8"	G 3/8"
V0980	IF 4 VIE 1/2"	G 1/2"
V0990	IF 4 VIE 3/4"	G 3/4"



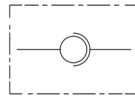
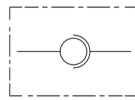
V0920	DF 6 VIE 3/8"	G 3/8"
V0940	DF 6 VIE 1/2"	G 1/2"
V0950	DF 6 VIE 3/4"	G 3/4"
V0960	DF 6 VIE 1"	G 1"

DIVERTER VALVES



REF	TYPE	PORT SIZE
V0930	DF 6 VIE 3/8" ACCIAIO	G 3/8"
V0932	DF 6 VIE 1/2" ACCIAIO	G 1/2"

ROTATING COUPLINGS



G1050	GGL 1/4"	1/4"
G1060	GGL 3/8"	3/8"
G1070	GGL 1/2"	1/2"
G1080	GGL 3/4"	3/4"
G1090	GGL 1"	1"
G1091	GGL 1" 1/4	1"1/4
G1092	GGL 1" 1/2	1"1/2
G1093	GGL 2"	2"

G0990	GG 90° 1/4"	1/4"
G1010	GG 90° 3/8"	3/8"
G1020	GG 90° 1/2"	1/2"
G1030	GG 90° 3/4"	3/4"
G1040	GG 90° 1"	1"
G1042	GG 90° 1" 1/4	1"1/4
G1043	GG 90° 1" 1/2	1"1/2
G1044	GG 90° 2"	2"

FITTINGS FOR VALVES MOUNTING



OCCHIO CORTO	G1/4" - G3/8" - G1/2 - 18
OCCHIO MEDIO	G1/4" - G3/8" - G1/2 - 18
OCCHIO LUNGO	G1/4" - G3/8" - G1/2 - 18
OCCHIO EXTRA 300mm	G1/4" - G3/8"
OCCHIO EXTRA 400mm	G1/4" - G3/8"
OCCHIO EXTRA 500mm	G1/4" - G3/8"
OCCHIO CONICO	G1/4" - G3/8" - G1/2"
OCCHIO CON DADO E OGIVA	G1/4" - G3/8" - G1/2 - 18



VITE FORATA NIPPLLO	G1/4" - G3/8" - G1/2 - 18 - 14
CON DADO E OGIVA	1/4" - G3/8" - G1/2"
NIPPLLO DOPPIO NIPPLLO	G1/4" - G3/8" - G1/2"
CON DADO E GIRELLO	G3/8" - G1/2" - G3/4"

NOTES

A series of horizontal dotted lines for writing notes, set against a background with a large white circle and light blue curved shapes.

NOTES

A series of horizontal dotted lines for writing notes, set against a background of light blue curved shapes.





CONTACT US

CALL +44 (0)1325 282732

EMAIL sales@fpeseals.com

BUY ONLINE www.fpeseals.com

